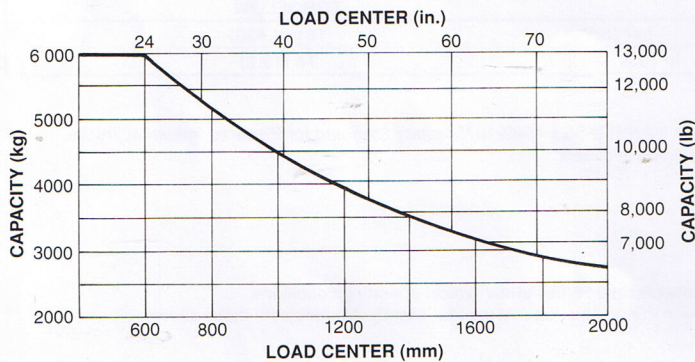
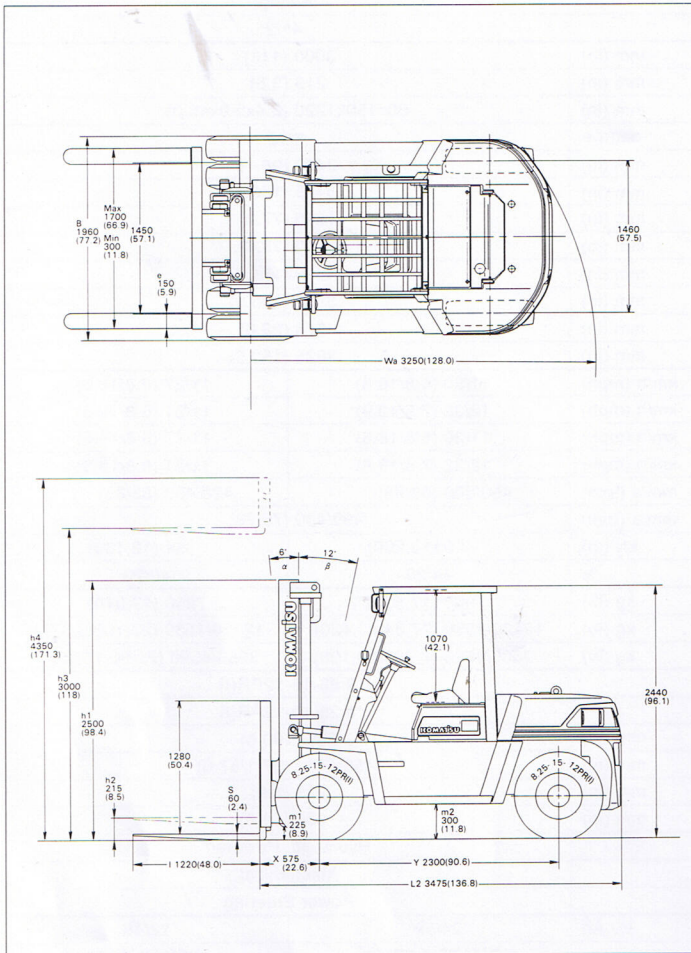


# KOMATSU

## FORKLIFT TRUCK PNEUMATIC TIRES DIESEL/GAS/LPG

# FD60-6 FG60-6



Capacities shown are for trucks equipped with 2-stage view mast up through 5500mm (217in.) maximum fork height, 1700mm (66.9in.) carriage, 1220mm (48in.) forks. Contact your distributor or dealer for capacity information with other equipment.

Maximum fork height mm (in.)	Overall height mm (in.)		Load* capacity kg (lb)	Free lift mm (in.) h2	Back tilt restriction β
	Lowered h1	Extended h4			
<b>2-stage view mast **</b>					
3000(118)	2500(98.4)	4350(171.3)	6000(13,000)	215(8.5)	12°
3500(138)	2750(108.3)	4850(190.9)			
4000(157)	3000(118.1)	5350(210.6)			
4500(177)	3350(131.9)	5850(230.3)			
5000(197)	3700(145.7)	6350(250.0)			
5500(217)	4050(159.4)	6850(269.7)			
6000(236)	4300(169.3)	7350(289.4)	5700(12,570)		
<b>2-stage full free view mast ***</b>					
3000(118)	<b>QUOTED UPON REQUEST</b>				
3300(130)					
3500(138)					
3700(146)					
4000(157)					
<b>3-stage full free view mast ***</b>					
4000(157)	2400(94.5)	5130(202.0)	5700(12,570)	1410(55.5)	6°
4300(169)	2500(98.4)	5430(213.8)		1510(59.4)	
4500(177)	2550(100.4)	5580(219.7)	5500(12,130)	1560(61.4)	
4700(185)	2625(103.3)	5805(228.5)		1635(64.4)	
5000(197)	2750(108.3)	6080(239.4)		1760(69.3)	
5500(217)	2950(116.1)	6580(259.1)	5300(11,680)	1960(77.2)	
6000(236)	3150(124.0)	7080(278.7)	5000(11,020)	2160(85.0)	

Standard mast is shown in broad frame.

\* Load capacity at 600mm (24in.) load center.

\*\* 1280mm (50.4in.) height load backrest.

\*\*\* Free lift and Overall height (extended) shown are for truck without load backrest.

Performance specifications are affected by the condition of the vehicle and how it is equipped as well as the nature and condition of the operating area. If these specifications are critical, please discuss the proposed application with your distributor or dealer.

### STANDARD EQUIPMENT

- Headlights ●Turn signal lamps ●Stop and tail lamps ●Back up lamps ●Fuel gauge ●Water temperature gauge ●Torque converter oil temperature gauge ●Hourmeter ●Safety checker ●Sedimenter warning lamp (Diesel) ●Engine key stop (Diesel) ●Horn ●Torque converter oil cooler ●Power brake ●Cyclonic air cleaner ●Tiltable steering column ●Drawbar pin

### OPTIONS

- Special length forks ●Extension forks ●Back up buzzer ●Rear working light ●Rear view mirror ●Exhaust gas purifier ●Spark arrester ●Upward exhaust pipe ●Overload warning buzzer ●Load indicator

### ATTACHMENTS

- Side shifter ●Bale clamp ●Multipurpose clamp ●Paper roll clamp ●Fork clamp ●Manipulator ●Hinged forks ●Hydraulic fork mover ●Manual fork mover



NOTE: Some items and components in photo may be optional equipment.

# Specification Sheet

Characteristics	1	Model	Manufacturer's designation			FD60-6	FG60-6	
	2	Capacity	Capacity at 600mm (24in.) Load Center			kg (lb) 6000 (13,000)		
	3	Power Type	Diesel, Gasoline, LPG			Diesel	Gasoline	
	4	Tire Type	Solid, Pneumatic			Pneumatic		
	5	Operator Type	Driver Standing, Sitting			Sitting		
	6	Wheels (*= driven)	Number front / rear			4*/2		
Dimensions	7	Lift	h3	Std. Fork Height		mm (in) 3000 (118)		
	8		h2	Free Lift		mm (in) 215 (8.5)		
	9	Forks	s.e.l.	Thickness x Width x Lenght		mm (in) 60x150x1220 (2.4x5.9x48.0)		
	10	Tilting Angle	$\alpha / \beta$	Forward / Backward		degree 6/12		
	11	Overall Dimensions	H	Height, Overhead Guard		mm (in) 2440 (96.1)		
	12		L2	Length to face of forks		mm (in) 3475 (136.8)		
	13		B	Width		mm (in) 1960 (77.2)		
	14		h1	Height, Mast lowered		mm (in) 2500 (98.4)		
	15		h4	Height, Mast extended		mm (in) 4350 (171.3)		
	16	Turning Radius	Wa	Outside		mm (in) 3250 (128.0)		
17	Load Distance	X	From Center of front axle		mm (in) 575 (22.6)			
18	Right Angle Stacking Aisle	Plus Load Length			mm (in) 3825 (150.6)			
Performance	19	Speeds	Travel	Forward	Loaded	1st / 2nd	km/h (mph) 11/30 (6.8/18.6)	11/27 (6.8/18.6)
	20			Unloaded	1st / 2nd	km/h (mph) 12/32 (7.5/19.9)	11/31 (6.8/19.3)	
	21		Reverse	Loaded	1st / 2nd	km/h (mph) 11/30 (6.8/18.6)	11/27 (6.8/18.6)	
	22		Unloaded	1st / 2nd	km/h (mph) 12/32 (7.5/19.9)	11/31 (6.8/19.3)		
	23	Lifting	Loaded / Unloaded		mm/s (fpm) 450/500 (89/98)		420/430 (83/85)	
	24	Lowering	Loaded / Unloaded		mm/s (fpm) 400/400 (79/79)			
25	Max. Drawbar Pull				kn (lb) 59 (13,230)	54 (12,130)		
26	Gradeability	Loaded / Unloaded			% 44/23	40/23		
Weights	27	Service Weight				kg (lb) 7950 (17,530)	7850 (17,310)	
	28	Axle Loading	Loaded		front / rear	kg (lb) 12400/1550 (27,340/3,420)	12320/1530 (27,160/3,370)	
	29		Unloaded		front / rear	kg (lb) 3300/4620 (7,280/10,190)	3260/4590 (7,190/10,120)	
Chassis & Wheels	30	Tire Size	Front			8.25-15-12PR(I)		
	31		Rear			8.25-15-12PR(I)		
	32	Wheelbase	y			mm (in) 2300 (90.6)		
	33	Tread	front / rear		mm (in) 1450/1460 (57.1/57.5)			
	34	Ground Clearance	m1	Lowest point		mm (in) 225 (8.9)		
	35		m2	Center of frame		mm (in) 300 (11.8)		
	36	Brakes	Service			Hydraulic, Powered		
	37		Parking			Mechanical		
38	Steering	Type			Power Steering			
Drive	39	Battery	Voltage / Capacity 5-hour rating		V / Ah 24/52	12/48		
	40	Internal Combustion Engine	Make / Model		KOMATSU 6D95L	NISSAN TB42		
	41		Rated Horsepower / RPM		kw (HP) / rpm 71 (95)/2250	66 (88)/2300		
	42		Max. Torque / RPM		Nm (lb.ft) / rpm 314 (231)/1500	275 (203)/1400		
	43		Number of cylinders / Displacement		cc (cu.in) 6/4890 (298)	6/4169 (254)		
	44		Cylinder Bore x Stroke		mm (in) 95x115 (3.7X4.5)	96x96 (3.8X3.8)		
	45		Fuel Tank Capacity		ltr (U.S.gal) 120 (31.7)			
	46		Air Cleaner		Cyclone			
	47	Clutch	Type			Torque Converter		
	48	Transmission	Type			TORQFLOW		
49	Hydraulic	Max. Pressure		bar (psi) 181 (2,630)				
50		Tank Capacity		ltr (U.S.gal) 75 (19.8)				

## ANSI AND INSURANCE CLASSIFICATION

Overhead guard on standard truck meets all applicable mandatory requirements of Part II-ANSI-B 56.1 1969-1975 Safety Standard for Powered Industrial Trucks. Underwriters Laboratories requirements as to fire hazard only for Type G & D, classifications available.

Performance may vary due to operating conditions. The performance shown represents nominal values under typical operating conditions. Most values shown in this publication are rounded. Therefore, direct conversion between metric and imperial may be slightly different from those shown. Specifications are subject to improvements and changes without notice.



**KLOZ**  
GMBH & CO KG  
GABELSTAPLER  
ELEKTROFAHRZEUGE

Salierstraße 35  
70736 Fellbach  
Telefon 07 11/5 18 28-0  
Telefax 07 11/5 18 28 35